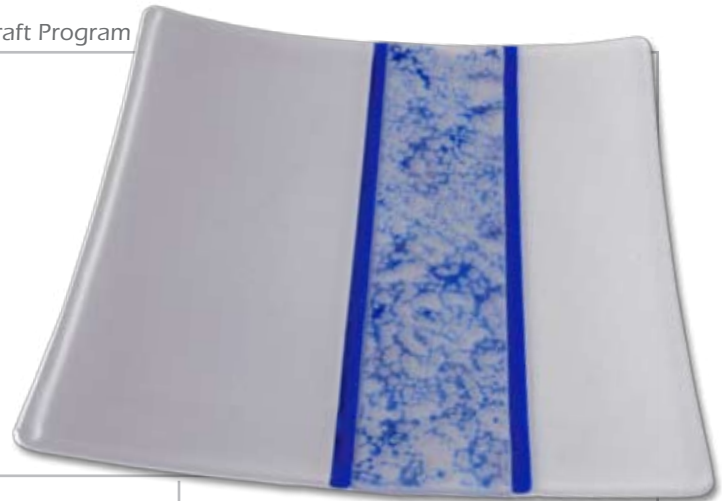


# Project Guide

## Frit Lace Accents

Glass Cutting: **straight cutting**

Firings: **contour fuse +**



### Step-by-Step

1. Create elegant, organic effects with this easy technique. Begin with a kiln shelf lined with ThinFire paper. Choose two or three coordinating shades of fine frit. Sprinkle the frit randomly on the paper, concentrating color in some areas while leaving other small areas open.
2. Contour fuse (to about 1440° hold for 5 minutes.)
3. Carefully remove all traces of Thinfire paper by dipping the fused "Frit Lace" sheet into a shallow container of water and gently wiping. Place the finished piece of frit lace on a single sheet of Clear glass or other neutral/ coordinating color (see variations). Note: at this stage, the Frit Lace is very delicate -- handle with care!
4. Contour fuse again.
5. Now you have a sheet of custom glass that you can use to accent projects with. Cut on the smooth bottom side and have fun!

### Variations



Red, Orange and Marigold Opal Frit Lace fused onto Black base. After second fusing, strips were cut and used as a border accent.



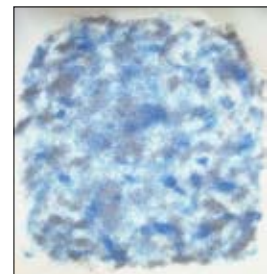
Moss Green and Teal Frit Lace fused onto an Ivory base. After second firing, squares were cut and laid on alternating Moss Green and Teal transparent squares on top of an Ivory base.

### Materials We Used

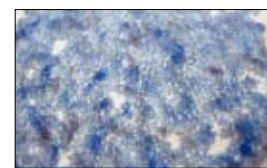
**Frit:** Fine grade Light Blue, Dark Blue and Grape

**Finished project:** Layer 1 = 218-71SF Stone. Layer 2 = Clear, 1/8" strips of 132SF and a Frit Lace strip.

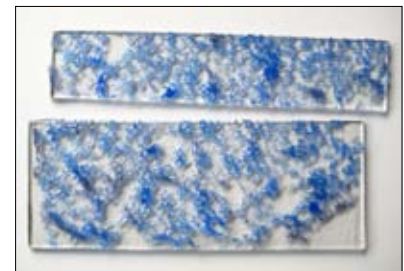
### Keys to Success



Frit sprinkled onto shelf.



Frit Lace after fusing.



Frit Lace fused onto clear base, cut into strips.